

The NEW ENGLAND JOURNAL of MEDICINE

ESTABLISHED IN 1812

JUNE 23, 2011

VOL. 364 NO. 25

Exemestane for Breast-Cancer Prevention in Postmenopausal Women

Paul E. Goss, M.D., Ph.D., James N. Ingle, M.D., José E. Alés-Martínez, M.D., Ph.D., Angela M. Cheung, M.D., Ph.D., Rowan T. Chlebowski, M.D., Ph.D., Jean Wactawski-Wende, Ph.D., Anne McTiernan, M.D., John Robbins, M.D., Karen C. Johnson, M.D., M.P.H., Lisa W. Martin, M.D., Eric Winqvist, M.D., Gloria E. Sarto, M.D., Judy E. Garber, M.D., Carol J. Fabian, M.D., Pascal Pujol, M.D., Elizabeth Maunsell, Ph.D., Patricia Farmer, M.D., Karen A. Gelmon, M.D., Dongsheng Tu, Ph.D., and Harriet Richardson, Ph.D., for the NCIC CTG MAP.3 Study Investigators*

ABSTRACT

BACKGROUND

Tamoxifen and raloxifene have limited patient acceptance for primary prevention of breast cancer. Aromatase inhibitors prevent more contralateral breast cancers and cause fewer side effects than tamoxifen in patients with early-stage breast cancer.

METHODS

In a randomized, placebo-controlled, double-blind trial of exemestane designed to detect a 65% relative reduction in invasive breast cancer, eligible postmenopausal women 35 years of age or older had at least one of the following risk factors: 60 years of age or older; Gail 5-year risk score greater than 1.66% (chances in 100 of invasive breast cancer developing within 5 years); prior atypical ductal or lobular hyperplasia or lobular carcinoma in situ; or ductal carcinoma in situ with mastectomy. Toxic effects and health-related and menopause-specific qualities of life were measured.

RESULTS

A total of 4560 women for whom the median age was 62.5 years and the median Gail risk score was 2.3% were randomly assigned to either exemestane or placebo. At a median follow-up of 35 months, 11 invasive breast cancers were detected in those given exemestane and in 32 of those given placebo, with a 65% relative reduction in the annual incidence of invasive breast cancer (0.19% vs. 0.55%; hazard ratio, 0.35; 95% confidence interval [CI], 0.18 to 0.70; $P=0.002$). The annual incidence of invasive plus noninvasive (ductal carcinoma in situ) breast cancers was 0.35% on exemestane and 0.77% on placebo (hazard ratio, 0.47; 95% CI, 0.27 to 0.79; $P=0.004$). Adverse events occurred in 88% of the exemestane group and 85% of the placebo group ($P=0.003$), with no significant differences between the two groups in terms of skeletal fractures, cardiovascular events, other cancers, or treatment-related deaths. Minimal quality-of-life differences were observed.

CONCLUSIONS

Exemestane significantly reduced invasive breast cancers in postmenopausal women who were at moderately increased risk for breast cancer. During a median follow-up period of 3 years, exemestane was associated with no serious toxic effects and only minimal changes in health-related quality of life. (Funded by Pfizer and others; NCIC CTG MAP.3 ClinicalTrials.gov number, NCT00083174.)

From Massachusetts General Hospital Cancer Center (P.E.G.) and Dana-Farber Cancer Institute (J.E.G.) — both in Boston; Mayo Clinic, Rochester, MN (J.N.I.); Hospital Nuestra Señora De Sonsoles, Ávila, Spain (J.E.A., on behalf of the Spanish Group for Breast Cancer Research); Los Angeles Biomedical Research Institute, Harbor-UCLA Medical Center, Torrance, CA (R.T.C.); University at Buffalo, Buffalo, NY (J.W.-W.); Division of Public Health Sciences, Fred Hutchinson Cancer Research Center, Seattle (A.M.); University of California, Davis, Sacramento (J.R.); University of Tennessee Health Science Center, Memphis (K.C.J.); George Washington University School of Medicine, Washington, DC (L.W.M.); University of Wisconsin School of Medicine and Public Health, Madison (G.E.S.); Kansas University Medical Center, Kansas City (C.J.F.); Centre Hospitalier Universitaire Arnaud de Villeneuve, Montpellier, France (P.P., on behalf of the National Federation of French Cancer Centers); University Health Network, Toronto (A.M.C.); London Health Sciences Centre, London, ON (E.W.); Unité de recherche en santé des populations de l'Université Laval, Quebec (E.M.); Queen's University Pathology and Molecular Medicine, Kingston, ON (P.F.); British Columbia Cancer Agency, Vancouver, BC (K.A.G.), and NCIC Clinical Trials Group, Kingston, ON (D.T., H.R.) — all in Canada. Address reprint requests to Dr. Goss at Massachusetts General Hospital Cancer Center, Lawrence House, LRH-302, Boston, MA 02114, or at pgoss@partners.org.

*The NCIC Clinical Trials Group MAP.3 (NCIC CTG MAP.3) investigators are listed in the Supplementary Appendix, available at NEJM.org.

This article (10.1056/NEJMoa1103507) was published on June 4, 2011, and updated on June 23, 2011, at NEJM.org.

N Engl J Med 2011;364:2381-91.

Copyright © 2011 Massachusetts Medical Society.

ESTROGENS CONTRIBUTE TO NORMAL breast development but can also promote breast cancer in preclinical models and in women with high circulating plasma estrogen levels.¹⁻⁴ To date, chemoprevention of breast cancer has focused on the selective estrogen-receptor modulators (SERMs) tamoxifen and raloxifene, which exert antiestrogenic effects on the breast, as well as agonist or antagonist effects on other organs. In the National Surgical Adjuvant Breast and Bowel Project P-1 trial, tamoxifen significantly reduced the number of invasive breast cancers, by 49% ($P < 0.001$) as compared with placebo.⁵ A meta-analysis of trials comparing tamoxifen with placebo showed that tamoxifen reduced the incidence of breast cancer by 38% with no effect on mortality.⁶ On the basis of these collective data on tamoxifen, the estimated number needed to treat to prevent one breast cancer after 5 years is about 95 and is reduced to 56 after 10 years.⁷ Similar risk reductions occur with raloxifene.⁸⁻¹⁰ Tamoxifen increases the risks of endometrial cancers and venous thromboembolism; raloxifene does not increase the risk of endometrial cancers but does cause similar toxic effects.

The acceptance of tamoxifen or raloxifene for reducing the risk of breast cancer has been poor, in part because they are both associated with rare but serious toxic effects.¹¹⁻¹³ Of the approximately 2 million U.S. women who could potentially benefit from treatment with tamoxifen, only 4% of those at increased risk for breast cancer and only 0.08% of all U.S. women 40 to 79 years of age have accepted the use of this drug for chemoprevention.¹³⁻¹⁵ A 2002 expert assessment concluded that tamoxifen lacks overall health benefits and recommended that future trials be conducted with placebo controls.¹⁶ Novel, less toxic interventions are needed that will reduce the threshold of risk yet provide a net benefit.¹⁷

Aromatase inhibitors profoundly suppress estrogen levels in postmenopausal women and inhibit the development of breast cancer in laboratory models.¹⁸⁻²¹ In early trials of breast cancer therapy, both nonsteroidal and steroidal aromatase inhibitors reduced contralateral primary breast cancers more than did tamoxifen; after 5 years of tamoxifen therapy, letrozole resulted in a further reduction of 46%, as compared with placebo.²²⁻²⁷ Preclinical models and clinical studies suggest that because of exemestane's antiestrogenic effects, such as those on bone resorption due to this drug's

mild androgenic activity, it is a good candidate for study in a breast-cancer prevention trial.²⁸⁻³⁰

METHODS

STUDY DESIGN

The NCIC Clinical Trials Group Mammary Prevention.3 trial (NCIC CTG MAP.3) is an international, randomized, double-blind, placebo-controlled trial conducted in Canada, the United States, Spain, and France. The trial was approved by the health regulatory authorities and institutional review boards at the participating centers, and enrollment began in September 2004. After stratification according to current use of low-dose aspirin (≤ 100 mg per day) (yes or no) and Gail risk score (for calculation of this score, see www.cancer.gov/bcrisktool and the Supplementary Appendix, available with the full text of this article at NEJM.org) ($\leq 2.0\%$ or $> 2.0\%$), subjects were randomly assigned to one of three treatment groups with the use of a dynamic minimization algorithm: 25 mg of exemestane plus placebo, 25 mg of exemestane plus celecoxib, or placebo plus placebo pills, administered daily after a morning meal.^{31,32} After 31 patients were enrolled, 10 patients discontinued treatment with celecoxib because of concern for cardiovascular safety.³³ Before enrollment and during the study, written informed consent and re-consent in all the participating countries included counseling about the risks and benefits of treatment with tamoxifen and raloxifene. The trial was event-driven, with a planned maximum duration of therapy of 5 years or until a breast event, a neoplastic disease, or a cardiovascular event was diagnosed or unacceptable toxicity developed.

PARTICIPANTS

Women 35 years of age or older were eligible if they were postmenopausal (older than 50 years of age with no spontaneous menses for at least 12 months; or 50 years of age or younger either with no spontaneous menses [amenorrheic] within 12 months of randomization [e.g., spontaneous or secondary to hysterectomy] and a follicle-stimulating hormone level within the postmenopausal range or with prior bilateral oophorectomy). In addition, women had at least one of the following risk factors: age 60 years or older; Gail risk score greater than 1.66%; prior atypical ductal or lobular hyperplasia or lobular carcinoma in situ on breast biopsy or prior ductal carcinoma in situ treated with mas-

tectomy. Prior menopausal hormone therapies (estrogen with or without progestin), luteinizing hormone–releasing hormone analogues, prolactin inhibitors, antiandrogens, or selective estrogen-receptor modulators were allowable, but not within 3 months of randomization. Women were ineligible if they were premenopausal, had prior invasive breast cancer or prior ductal carcinoma in situ treated with lumpectomy, were known carriers of the BRCA1 or BRCA2 gene, had a history of other malignancies (except nonmelanoma skin cancer, treated in situ cancer of the cervix, or other solid tumors treated with no evidence of disease for 5 years), had uncontrolled hypothyroidism or hyperthyroidism, or had chronic liver disease.

END POINTS AND ASSESSMENT

The primary outcome was incidence of invasive breast cancer. Secondary end points included a combined incidence of invasive and noninvasive (ductal carcinoma in situ) breast cancer; incidence of receptor-negative invasive breast cancer; incidence of combined atypical ductal hyperplasia, atypical lobular hyperplasia, and lobular carcinoma in situ; number of clinical breast biopsies; clinical fractures; adverse cardiovascular events, including myocardial infarction or coronary heart disease that resulted in death; overall incidence of other cancers; the side-effect profile and safety; and health-related and menopause-specific qualities of life (assessed by means of the Medical Outcomes Study 36-Item Short-Form Health Survey [SF-36] and the Menopause-Specific Quality of Life [MENQOL] questionnaire, respectively³⁴⁻³⁶).

At baseline, each patient's history of prior diseases and treatment, family history of cancer, and reproductive history were obtained. Physical examination was performed, including height, weight, blood pressure, pulse, and clinical breast examination to confirm no suspicious breast abnormalities. Other requirements included complete blood count, liver-function tests, renal-function tests, and normal results on bilateral mammography and bone-mineral-density measurements within the past year. Symptoms at baseline were graded according to the National Cancer Institute's Common Terminology Criteria for Adverse Events (CTCAE), version 3.0.³⁷ Quality of life (QOL) was measured within 1 week before randomization. Clinical assessments occurred at 6 and 12 months after randomization and yearly thereafter and in-

cluded physical examination with clinical breast examinations, recording of concomitant medications, symptoms and adverse events, and QOL assessments. Women discontinuing the study drug continued to undergo clinical assessments and follow-up for clinical outcomes and adverse events.

Mammography was required within 12 months before randomization and every 12 months from the time of the initial mammogram during and after the treatment. Breast cancers could be detected on clinical breast examination during the clinic visits or on annual mammography. All mammograms and radiographic reports of fractures were reviewed centrally, and all evidence of disease on breast-biopsy specimens was reviewed by an adjudication committee. Study accrual and safety data were reviewed every 6 months by an independent data and safety monitoring committee. The original protocol and subsequent amendments are available at NEJM.org.

STATISTICAL ANALYSIS

The planned final analyses presented here include invasive breast cancer incidence and other secondary breast cancer end points, estimated on the basis of time from randomization to when an end point was reached. The sample-size estimate was based on an assumption of a rate of invasive breast cancer of 0.60% per year in the group given placebo, as compared with 0.21% in those treated with exemestane, with a relative reduction of 65% with exemestane. To detect this with a two-sided 5% level and 90% power, a total of 38 cases of invasive breast cancer were required, projected to occur when 4560 women were randomly assigned to treatment groups in a 3-year period and then followed for an additional 1.2 years. No interim analyses were planned. Accrual was completed on March 23, 2010; the protocol target-event rate was met on November 5, 2010. All data queries were resolved, and the database was locked on March 1, 2011.

Comparisons of time-to-event primary and secondary end points were based on the stratified log-rank test, adjusting for the two stratification factors at randomization. Cox proportional-hazards models were used to derive hazard ratios and associated 95% confidence intervals. Fisher's exact test was used to compare adverse events between the treatment and placebo groups. Mean change scores from baseline to each assessment were calculated for all SF-36 and MENQOL subscales

Table 1. Baseline Characteristics of Patients Randomly Assigned to Exemestane or Placebo.*

Characteristic	Exemestane (N=2285)	Placebo (N=2275)
White race — no. of patients (%)†	2138 (93.6)	2123 (93.3)
Age		
Median — yr	62.5	62.4
Range — yr	38.5–88.2	37.1–89.9
≥60 yr — no. of patients (%)	1545 (67.6)	1572 (69.1)
Body-mass index‡		
Median	27.9	28.1
Range	15.9–54.3	16.3–65.4
Breast cancer risk factors — no. of patients (%)		
Gail score indicating 5-year risk >1.66%§	929 (40.7)	905 (39.8)
Age ≥60 yr	1114 (48.8)	1126 (49.5)
Prior ADH, ALH, or LCIS on breast biopsy	185 (8.1)	188 (8.3)
Prior DCIS treated with mastectomy	56 (2.5)	56 (2.5)
Gail 5-yr risk score§		
No. of patients assessed	2171	2163
Median score — %	2.3	2.3
Range	0.6–21.0	0.6–15.1
Score >2.0 — no. of patients (%)	1321 (57.8)	1300 (57.1)
Prior therapy — no. of patients (%)		
Hormone-replacement therapy	1310 (57.3)	1327 (58.3)
Bisphosphonate therapy	427 (18.7)	414 (18.2)
Lipid-lowering drugs	738 (32.3)	696 (30.6)
Cardiovascular drugs	955 (41.8)	973 (42.8)
Selective estrogen-receptor modulators	104 (4.6)	116 (5.1)
Medical conditions — no. of patients (%)		
Prior clinical skeletal fracture	409 (17.9)	400 (17.6)
Current osteoporosis	303 (13.3)	293 (12.9)
Prior cardiovascular event	267 (11.7)	255 (11.2)
Bone mineral density		
In total hip		
No. of patients assessed	2136	2136
Mean value — g/cm ²	0.92±0.16	0.92±0.14
In L1–L4 posteroanterior spine		
No. of patients assessed	1990	2010
Mean value — g/cm ²	1.06±0.39	1.06±0.39

* Plus-minus values are means ±SD. Women may have received more than one prior therapy and may have had more than one medical problem. ADH denotes atypical ductal hyperplasia, ALH atypical lobular hyperplasia, DCIS ductal carcinoma in situ, and LCIS lobular carcinoma in situ.

† Race was self-reported.

‡ The body-mass index is the weight in kilograms divided by the square of the height in meters.

§ The Gail score calculates breast cancer risk based on known clinical risk factors (see www.cancer.gov/bcrisktool and the Supplementary Appendix at NEJM.org).

and summaries. Changes measuring 5 to 10% of the scale breadth or 0.5 SD were considered to be potentially clinically meaningful.^{38–40} Scores measuring changes in QOL were considered worsened if they decreased by 5 or more points (out of a total of 100) from baseline on the SF-36 and if they increased by 0.5 or more points (out of a total of 8) on the MENQOL. A chi-square test was used to compare the differences in proportions of patients found to have potentially clinically meaningful changes in QOL.

The study drug, exemestane, and funding support were provided by Pfizer, but this sponsor had no role in the design of the study or in the accrual, management, or analysis of the data. The decision to publish and the drafting of the manuscript were undertaken entirely by the first author, coauthors, and staff at the NCIC CTG central office, who vouch for the fidelity of the study to the protocol and for the accuracy and completeness of the data.

RESULTS

Between February 11, 2004, and March 23, 2010, 4560 women were randomly assigned to either exemestane (2285 patients) or placebo (2275 patients). After randomization, 15 women (6 taking exemestane and 9 taking placebo) were considered to be ineligible to continue with the study but are included in the primary intention-to-treat analysis as randomly assigned. The exemestane and placebo groups were well balanced for race, body-mass index, and breast cancer risk factors (Table 1, and Table 1 in the Supplementary Appendix). Major risk factors among the women who were enrolled included age of at least 60 years (49%); 5-year risk of breast cancer developing (Gail risk score >1.66%) (40%), and prior atypical ductal hyperplasia, atypical lobular hyperplasia, lobular carcinoma in situ, or prior ductal carcinoma in situ treated with mastectomy (11%). Prior menopausal hormone therapy use was recorded in 1310 women in the exemestane group (57.3%; range from 1 to 588 months) and 1327 women in the placebo group (58.3%; range from 1 to 360 months). Pretreatment bone mineral density and prior history of clinical fractures, cardiovascular risk factors, and the concomitant use of bisphosphonates, lipid-lowering drugs, and cardiovascular drugs were similar in the two study groups.

On November 5, 2010, at the time of the clinical data cutoff, 735 women (32.8%) assigned

Table 2. Incidence of Invasive and Preinvasive Breast Events by Treatment Group.*

Type of Event	Exemestane (N=2285)		Placebo (N=2275)		Hazard Ratio (95% CI)†	P Value‡
	No. of Cases	Annual Incidence (%)	No. of Cases	Annual Incidence (%)		
Invasive breast cancer						
All cases	11	0.19	32	0.55	0.35 (0.18–0.70)	0.002
ER-positive	7	0.12	27	0.46	0.27 (0.12–0.60)	<0.001
ER-negative	4	0.07	5	0.09	0.80 (0.21–2.98)	0.74
PR-positive	5	0.09	20	0.34	0.26 (0.10–0.69)	0.004
PR-negative	6	0.10	12	0.20	0.50 (0.19–1.33)	0.16
HER2/neu-positive	0	0.00	6	0.10	NA	NA
HER2/neu-negative	10	0.17	26	0.44	0.40 (0.19–0.82)	0.01
HER2/neu unknown	1	NA	0	NA	NA	NA
T stage 1	8	0.14	28	0.48	0.29 (0.13–0.65)	0.001
T stages 2 to 4	3	0.05	3	0.05	0.98 (0.20–4.86)	0.98
T stage X	0	NA	1	NA	NA	NA
Node-positive	3	0.05	9	0.15	0.33 (0.09–1.71)	0.08
Node-negative	7	0.12	22	0.38	0.33 (0.14–0.78)	0.008
Node unknown	1	NA	1	NA	NA	NA
M stage 0	11	0.19	30	0.51	0.38 (0.19–0.75)	0.004
M stage X1	0	NA	2	NA	NA	NA
DCIS§	9	0.16	14	0.24	0.65 (0.28–1.51)	0.31
Invasive breast cancer and DCIS§	20	0.35	44	0.77	0.47 (0.27–0.79)	0.004
ADH, ALH, and LCIS	4	0.07	11	0.20	0.36 (0.11–1.12)	0.08

* ADH denotes atypical ductal hyperplasia, ALH atypical lobular hyperplasia, CI confidence interval, DCIS ductal carcinoma in situ, ER estrogen receptor, HER2 human epidermal growth factor receptor type 2, LCIS lobular carcinoma in situ, NA not available (i.e., not calculated because of small number of events), and PR progesterone receptor.

† The hazard ratio is for the comparison of exemestane with placebo.

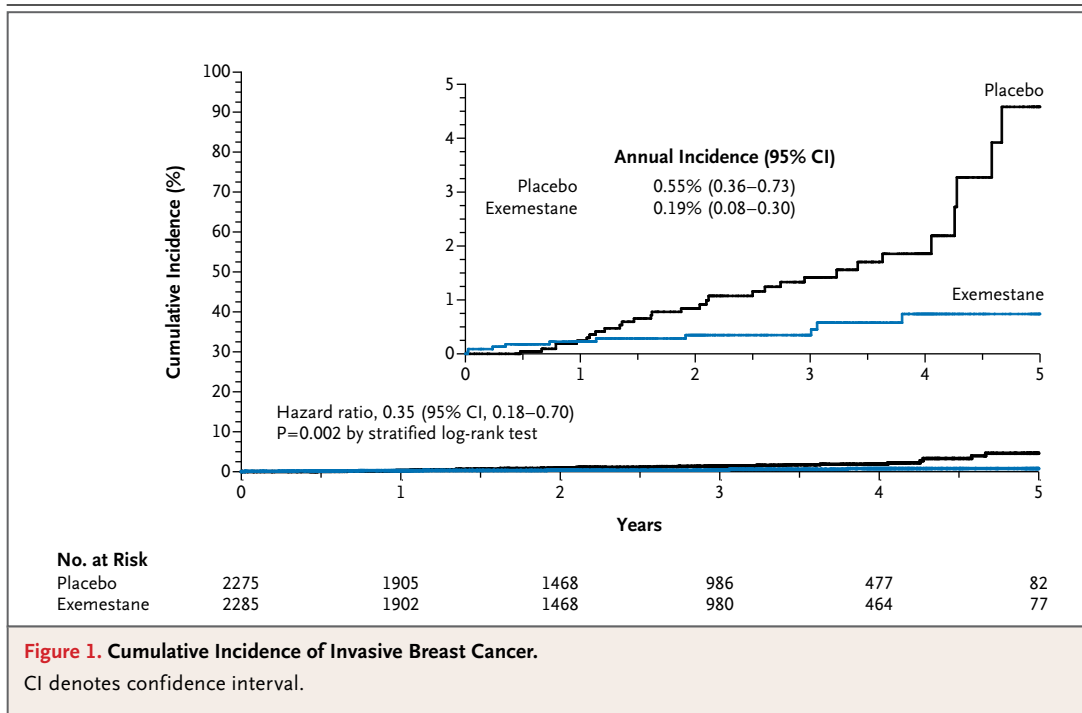
‡ P values were obtained with the use of a stratified log-rank test.

§ Women with prior DCIS at baseline were excluded.

to exemestane and 646 women (28.7%) assigned to placebo were no longer taking the study medication. About 5% in each group had discontinued the protocol treatment because of treatment completion. The major reasons for early discontinuation of the protocol treatments were toxic effects (15.4% in the exemestane groups vs. 10.8% in the placebo group, $P<0.001$) and patient refusal (6.9% vs. 6.0%, $P=0.22$). The median time from randomization to off-protocol treatment was 10.2 months (range, 0.1 to 61.5) for exemestane and 14.2 months (range, 0.1 to 62.9) for placebo. Approximately 85% of women were compliant and 15% were noncompliant with the protocol guide-

lines for the study treatments. Scheduled annual mammography was performed equally in the two groups, with 7.2% and 7.7% of women having missed at least one scheduled mammography appointment in the exemestane and placebo groups, respectively.

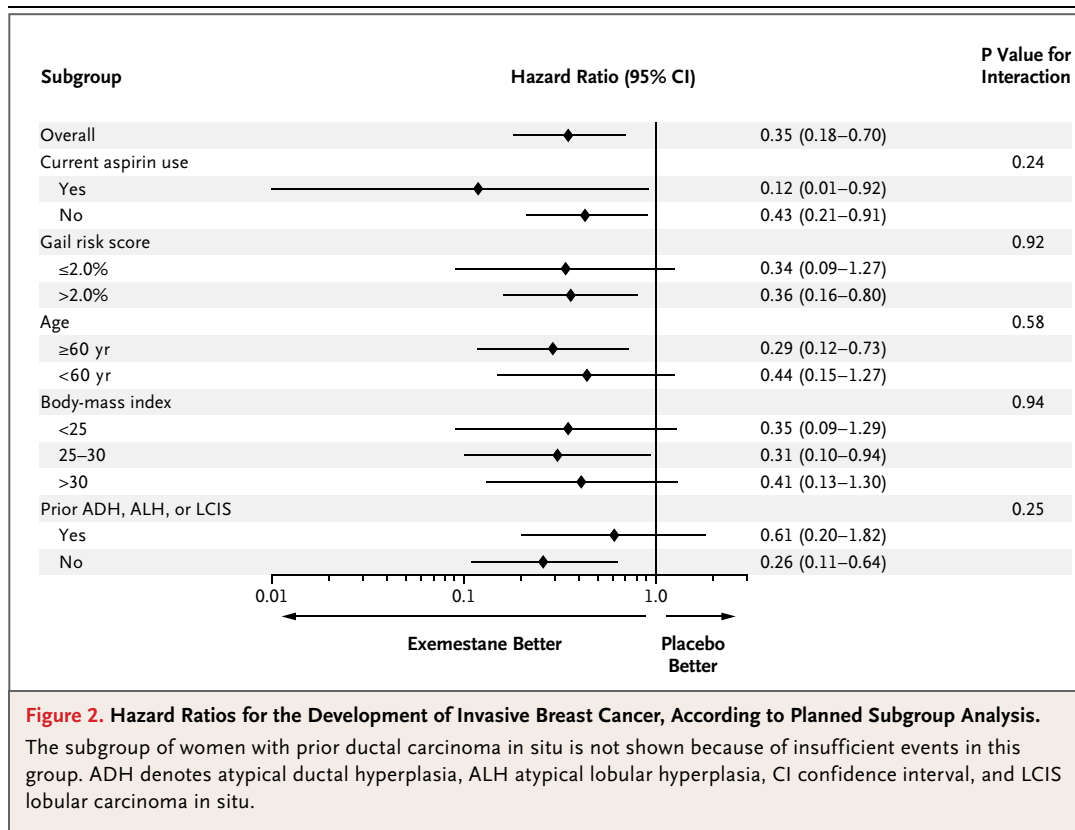
At a median of 35 months of follow-up (range, 0 to 63.4), 43 invasive breast cancers were diagnosed: 11 in the exemestane groups and 32 in the placebo group (annual incidence, 0.19% with exemestane vs. 0.55% with placebo; hazard ratio, 0.35 with exemestane; 95% confidence interval [CI], 0.18 to 0.70) (Table 2). Figure 1 shows the cumulative incidence of invasive breast cancer in



these two groups. There were 37 ductal (10 in the exemestane groups and 27 in the placebo group) and 6 lobular (1 in the exemestane groups and 5 in the placebo group) cancers. The majority of cancers in each group were estrogen-receptor-positive, HER2/neu-negative, and node-negative (Table 2). Exemestane appeared to be superior to placebo in all prespecified subgroups defined by concurrent use of low-dose aspirin, Gail risk score, age, body-mass index, prior atypical ductal hyperplasia, atypical lobular hyperplasia, or lobular carcinoma in situ and prior ductal carcinoma in situ treated with mastectomy (Fig. 2). Exemestane also appeared to be superior in unplanned subgroups: invasive breast cancers according to prior use of menopausal hormone therapy (hazard ratio, 0.30 for prior users; 95% CI, 0.11 to 0.81; hazard ratio, 0.41 for prior nonusers; 95% CI, 0.16 to 1.05) and continent of residence (hazard ratio, 0.34 for North America; 95% CI, 0.16 to 0.71; hazard ratio, 0.39 for Europe; 95% CI, 0.07 to 1.99). The annual incidence of invasive breast cancer plus ductal carcinoma in situ (20 in the exemestane group and 44 in the placebo group) was 0.35% and 0.77% in the exemestane and placebo groups, respectively (hazard ratio, 0.47; 95% CI, 0.27 to 0.79). Combined lobular carcinoma in situ, atypical ductal hyperplasia, and atypical lobular hyperplasia occurred in 4 women

(0.2%) in the exemestane group and 11 (0.5%) in the placebo group (hazard ratio, 0.36; 95% CI, 0.11 to 1.12). The number needed to treat to prevent one case of invasive breast cancer with exemestane therapy was 94 in 3 years and 26 in 5 years, but few women completed 5 years of therapy.

Table 3 (and Table 2 in the Supplementary Appendix) shows adverse events that occurred in 5% or more of women, with a difference between groups of 1% or more and prespecified secondary end points of toxicity. Symptoms and adverse events (all grades) occurred in 88% of women in the exemestane group versus 85% in the placebo group (P=0.003). Arthritis (P=0.01) and hot flashes (P<0.001) were more common in the exemestane group, but differences between the groups in the frequency of those with grade 2 or higher symptoms were modest (arthritis, 6.5% vs. 4.0%; hot flashes, 18.3% vs. 11.9%). Table 3 (and Table 2 in the Supplementary Appendix) shows no significant differences between the two groups in prespecified secondary end points, including new diagnoses of osteoporosis or cardiovascular events. Clinical fracture rates were also similar in the two groups, and the proportion of women in each group who were prescribed bisphosphonate therapy during the trial was also similar (24.5% for exemestane and 24.1% for placebo). There was no significant



difference in the number of cancers other than breast cancer (50 [2.2%] vs. 44 [2.0%]) or time to detection of these cancers (1.8 yr vs. 1.6 yr). No significant differences were detected between the two groups with respect to hypercholesterolemia, hypertriglyceridemia, abnormal liver-function tests, acne, alopecia, rash, weight gain, or hair loss (data not shown). Table 3 in the Supplementary Appendix shows health-related and menopause-specific QOL results. Compliance in completing the QOL questionnaire at each follow-up visit was 92.9 to 97.4% for the exemestane group and 94.3 to 97.5% for the placebo group. No between-group differences in overall health-related QOL responses were found when distributions of worsened, stable, and improved scores on the SF-36 (Physical and Mental Component Scores) were compared despite worsened menopause-specific QOL among those taking exemestane (7% more overall). There were 38 deaths during the study (19 in each group). Causes of death in the exemestane and placebo groups, respectively, were breast cancer, 1 and 0; other malignancies, 10 and 12; cardiovascular events, 5 and 4; and other causes, 3 and 3. None were adjudicated as treatment-related.

DISCUSSION

In this randomized, placebo-controlled trial in healthy postmenopausal women, exemestane reduced the relative incidence of invasive breast cancers by 65%, from 0.55% to 0.19%. Exemestane also reduced the risk of known breast-cancer precursor lesions — ductal carcinoma in situ, lobular carcinoma in situ, atypical ductal hyperplasia, and atypical lobular hyperplasia — suggesting possible further reductions in invasive cancers during long-term follow-up. Most tumors in these study patients were estrogen-receptor-positive. HER2-positive tumors, which have a poor prognosis, were also reduced with exemestane. Future studies to corroborate this finding would be important.

Menopausal symptoms such as hot flashes, fatigue, sweating, insomnia, and arthralgia were frequent among all the women in the study but were predictably somewhat more common in those taking exemestane. Also of potential clinical importance, more women in the exemestane group self-reported that menopause-related vasomotor and sexual symptoms had worsened. How-

Table 3. Side Effects during Treatment, According to Severity.*

Side Effect	Exemestane (N=2240)					Placebo (N=2248)					P Value
	Grade 1	Grade 2	Grade 3	Grade 4	Total	Grade 1	Grade 2	Grade 3	Grade 4	Total	
	no.				no. (%)	no.				no. (%)	
Any	464	931	536	32	1963 (88)	557	877	437	30	1901 (85)	0.003
Cardiac: hypertension	119	109	112	1	341 (15)	124	118	109	3	354 (16)	0.65
Endocrine											
Hot flashes	489	344	67		900 (40)	450	225	43		718 (32)	<0.001
Fatigue	342	150	31	2	525 (23)	305	135	25		465 (21)	0.03
Sweating	284	201	1		486 (22)	263	169	1		433 (19)	0.046
Insomnia	117	98	15		230 (10)	127	55	7		189 (8)	0.04
Constitutional and gastrointestinal											
Diarrhea	77	32	9		118 (5)	58	16	1		75 (3)	0.002
Heartburn	223	92	17		332 (15)	200	79	10		289 (13)	0.06
Nausea	137	15	3		155 (7)	102	18	2		122 (5)	0.04
Musculoskeletal: arthritis	102	113	30	2	247 (11)	96	83	17		196 (9)	0.01
Neurologic											
Dizziness	145	35	9		189 (8)	152	48	9		209 (9)	0.32
Mood alteration or depression	123	90	19	4	236 (11)	128	98	8	1	235 (10)	0.96
Pain											
Back	106	77	21	2	306 (9)	119	80	23		222 (10)	0.45
Extremity	67	68	17	1	153 (7)	60	54	8		122 (5)	0.054
Joint	294	293	75	3	665 (30)	308	264	33	1	606 (27)	0.04
Muscle	69	62	16		147 (7)	111	67	14		192 (9)	0.01
Upper respiratory: cough	196	28	10		234 (10)	224	31	11		266 (12)	0.14
Sexual function: vaginal dryness	209	142	1		352 (16)	219	124			343 (15)	0.68
Secondary-end-point toxic effects											
Clinical skeletal fracture					149 (6.7)					143 (6.4)	0.72
New osteoporosis					37 (1.7)					30 (1.3)	0.39
Cardiovascular events					106 (4.7)					111 (4.9)	0.78
Other solid tumors or hematologic malignant lesions					43 (1.9)					38 (1.7)	0.58

* The grades of severity are based on the National Cancer Institute Common Terminology Criteria for Adverse Events (CTCAE), version 3.0, as follows: 0 indicates none, 1 mild (intervention not needed), 2 moderate (requiring minimal or noninvasive intervention and limiting age-appropriate activities of daily living), 3 severe (medically significant, requiring hospitalization, and limiting self-care activities of daily living), 4 life-threatening, and 5 death (related to the adverse event).

ever, these symptoms did not appear to affect self-reports of overall health-related QOL among those taking exemestane because summary measures of physical and mental components of the SF-36 did not differ between the two study groups. (Full QOL results are not reported here.) Unlike the rare endometrial cancers and thromboemboli associated with tamoxifen, particularly in post-

menopausal women, no serious adverse events or end-organ toxic effects, including fractures, were attributable to exemestane. Mild loss of bone mineral density with the aromatase inhibitors is well documented, but the annual excess incidence of fractures in trials comparing aromatase inhibitors and tamoxifen are probably due mainly to the bone-protective effects of tamoxifen.^{41,42} After the cessation of therapy in several large trials comparing aromatase inhibitors and tamoxifen in early breast cancer, bone mineral density improved and the difference in fracture rates was reduced.⁴³⁻⁴⁵ In these trials, adverse events also attenuated rapidly after cessation of treatment and correlated with recovery of estrogen levels to their normal postmenopausal range. The absence of excess clinical fractures in patients treated with exemestane in this study is reassuring. This occurred despite similar baseline bone mineral density in the two groups and the use of bisphosphonate therapy both before and during the study. Although differences in the occurrence of colorectal, lung, and endometrial cancers and malignant melanomas have been reported in tamoxifen comparator trials, no differences were seen in this trial or in the placebo-controlled MA.17 trial.^{26,46} Small numerical, but not significant, differences in the number of cardiovascular events have also been reported in trials comparing aromatase inhibitors with tamoxifen,^{22,23,46} with more events among the patients treated with aromatase inhibitors, and these differences may have been due to the slightly protective effect of tamoxifen, as suggested by Mouridsen et al.⁴⁷ It is reassuring that when the aromatase inhibitors were compared with placebo, these differences were not seen either in this prevention trial or in our early breast cancer MA.17 trial.

This trial has some limitations. The median follow-up of 3 years is relatively short, and although consistent with our projections, the total number of breast events (66) was small. The optimal duration of endocrine therapy for breast-cancer prevention is not known, but in a previous placebo-controlled trial of early breast can-

cer, we found that prolonged aromatase-inhibitor therapy was associated with continued reductions in the incidence of contralateral breast cancers even after the aromatase inhibitor was discontinued.⁴⁸ The number of women needed to treat in MAP.3 to prevent one case of breast cancer is 94 with 3 years of exemestane therapy, but is projected to be 26 at 5 years, although the number of women who received treatment for a full 5 years was low. By identifying subgroups of participants in the MAP.3 trial who would benefit most or who would be most vulnerable to toxic effects, one might be able to reduce the number needed to treat.

Despite these limitations we found a favorable risk-to-benefit ratio with a strong preventive effect of exemestane and, with a limited median follow-up of 3 years, an excellent safety profile across a spectrum of women at average to high risk for breast cancer. We reached our protocol-specified number of events for this final analysis; after unblinding, women taking the active drug will be offered exemestane to complete 5 years of therapy, and MAP.3 sites will have the option of offering 5 years of exemestane treatment to those initially assigned to placebo. We and others are conducting placebo-controlled trials in healthy women and patients with early breast cancer to evaluate prolonged aromatase-inhibitor therapy in postmenopausal women of similar age. The results of these ongoing trials should contribute to our understanding of the long-term efficacy and toxicity of aromatase inhibitors.

Supported by the Canadian Cancer Society Research Institute, the Canadian Institutes for Health Research, Pfizer, and the Avon Foundation.

Disclosure forms provided by the authors are available with the full text of this article at NEJM.org.

We thank the 4560 women (2824 from the United States, 1285 from Canada, 432 from Spain, and 19 from France) who agreed to participate in this study; the trial committee; the many investigators, pharmacists, and clinical research associates involved in the trial; Drs. Joe Pater and Lois Shepherd, Dianne Johnston, and Andrea Hiltz for their enthusiastic and unwavering support; the members of the NCIC CTG Data Safety Monitoring Committee; the Central Office staff of the NCIC CTG who contributed to the conduct of the trial; and Pfizer Pharmaceuticals for support and for providing exemestane and placebo.

REFERENCES

1. Clemons M, Goss P. Estrogen and the risk of breast cancer. *N Engl J Med* 2001; 344:276-85. [Erratum, *N Engl J Med* 2001; 344:1804.]
2. Eliassen AH, Missmer SA, Tworoger SS, Hankinson SE. Circulating 2-hydroxy- and 16alpha-hydroxy estrone levels and risk of breast cancer among postmenopausal women. *Cancer Epidemiol Biomarkers Prev* 2008;17:2029-35.
3. Ahlgren M, Melbye M, Wohlfahrt J, Sørensen TIA. Growth patterns and the risk of breast cancer in women. *N Engl J Med* 2004;351:1619-26.
4. The Endogenous Hormones and Breast Cancer Collaborative Group. Endogenous sex hormones and breast cancer in postmenopausal women: reanalysis

- of nine prospective studies. *J Natl Cancer Inst* 2002;94:606-16.
5. Fisher B, Costantino JP, Wickerham DL, et al. Tamoxifen for prevention of breast cancer: report of the National Surgical Adjuvant Breast and Bowel Project P-1 Study. *J Natl Cancer Inst* 1998;90:1371-88.
 6. Cuzick J, Powles T, Veronesi U, et al. Overview of the main outcomes in breast-cancer prevention trials. *Lancet* 2003;361:296-300.
 7. Cuzick J. Long-term follow-up in cancer prevention trials (It ain't over till it's over). *Cancer Prev Res (Phila)* 2010;3:689-91.
 8. Barrett-Connor E, Mosca L, Collins P, et al. Effects of raloxifene on cardiovascular events and breast cancer in postmenopausal women. *N Engl J Med* 2006;355:125-37.
 9. Martino S, Cauley JA, Barrett-Connor E, et al. Continuing outcomes relevant to Evista: breast cancer incidence in postmenopausal osteoporotic women in a randomized trial of raloxifene. *J Natl Cancer Inst* 2004;96:1751-61.
 10. Vogel VG, Costantino JP, Wickerham DL, et al. Effects of tamoxifen vs raloxifene on the risk of developing invasive breast cancer and other disease outcomes: the NSABP Study of Tamoxifen and Raloxifene (STAR) P-2 trial. *JAMA* 2006;295:2727-41.
 11. Armstrong K, Quistberg DA, Micco E, Domchek S, Guerra C. Prescription of tamoxifen for breast cancer prevention by primary care physicians. *Arch Intern Med* 2006;166:2260-5.
 12. Lippman SM. The dilemma and promise of cancer chemoprevention. *Nat Clin Pract Oncol* 2006;3:523.
 13. Ropka ME, Keim J, Philbrick JT. Patient decisions about breast cancer chemoprevention: a systematic review and meta-analysis. *J Clin Oncol* 2010;28:3090-5.
 14. Visvanathan K, Chlebowski RT, Hurley P, et al. American Society of Clinical Oncology 2008 clinical practice guideline update on the use of pharmacologic interventions including tamoxifen, raloxifene, and aromatase inhibition for breast cancer risk reduction. *J Clin Oncol* 2009;27:3235-58.
 15. Waters WA, Cronin KA, Graubard BI, Han PK, Freedman AN. Prevalence of tamoxifen use for breast cancer chemoprevention among U.S. women. *Cancer Epidemiol Biomarkers Prev* 2010;19:443-6.
 16. Chlebowski RT, Col N, Winer EP, et al. American Society of Clinical Oncology technology assessment of pharmacologic interventions for breast cancer risk reduction including tamoxifen, raloxifene, and aromatase inhibition. *J Clin Oncol* 2002;20:3328-43.
 17. Gail MH. Personalized estimates of breast cancer risk in clinical practice and public health. *Stat Med* 2011;30:1090-104.
 18. Goss PE. Breast cancer prevention — clinical trials strategies involving aromatase inhibitors. *J Steroid Biochem Mol Biol* 2003;86:487-93.
 19. Lubet RA, Steele VE, Casebolt TL, Eto I, Kelloff GJ, Grubbs CJ. Chemopreventive effects of the aromatase inhibitors vorozole (R-83842) and 4-hydroxyandrostenedione in the methylnitrosourea (MNU)-induced mammary tumor model in Sprague-Dawley rats. *Carcinogenesis* 1994;15:2775-80.
 20. De Coster R, Van Ginckel RE, Callens MJ, Goeminne NK, Janssens BL. Antitumoral and endocrine effects of (+)-vorozole in rats bearing dimethylbenzanthracene-induced mammary tumors. *Cancer Res* 1992;52:1240-4.
 21. Schieweck K, Bhatnagar AS, Batzl C, Lang M. Anti-tumor and endocrine effects of non-steroidal aromatase inhibitors on estrogen-dependent rat mammary tumors. *J Steroid Biochem Mol Biol* 1993;44:633-6.
 22. Baum M, Buzdar A, Cuzick J, et al. Anastrozole alone or in combination with tamoxifen versus tamoxifen alone for adjuvant treatment of postmenopausal women with early-stage breast cancer: results of the ATAC (Arimidex, Tamoxifen Alone or in Combination) trial efficacy and safety update analyses. *Cancer* 2003;98:1802-10.
 23. The Breast International Group (BIG) 1-98 Collaborative Group. A comparison of letrozole and tamoxifen in postmenopausal women with early breast cancer. *N Engl J Med* 2005;353:2747-57. [Erratum, *N Engl J Med* 2006;354:2200.]
 24. Coombes RC, Hall E, Gibson LJ, et al. A randomized trial of exemestane after two to three years of tamoxifen therapy in postmenopausal women with primary breast cancer. *N Engl J Med* 2004;350:1081-92. [Errata, 2004;351:2461, 2006;355:1746.]
 25. van de Velde CJ, Rea D, Seynaeve C, et al. Adjuvant tamoxifen and exemestane in early breast cancer (TEAM): a randomized phase 3 trial. *Lancet* 2011;377:321-31.
 26. Goss PE, Ingle JN, Martino S, et al. A randomized trial of letrozole in postmenopausal women after five years of tamoxifen therapy for early-stage breast cancer. *N Engl J Med* 2003;349:1793-802.
 27. Dowsett M, Cuzick J, Ingle J, et al. Meta-analysis of breast cancer outcomes in adjuvant trials of aromatase inhibitors versus tamoxifen. *J Clin Oncol* 2010;28:509-18.
 28. Goss PE, Qi S, Josse RG, et al. The steroidal aromatase inhibitor exemestane prevents bone loss in ovariectomized rats. *Bone* 2004;34:384-92.
 29. Joannahessine DC, Engan T, Di Salle E, et al. Endocrine and clinical effects of exemestane (PNU 155971), a novel steroidal aromatase inhibitor, in postmenopausal breast cancer patients: a phase I study. *Clin Cancer Res* 1997;3:1101-8.
 30. Goss PE, Hadji P, Subar M, Abreu P, Thomsen T, Banke-Bochita J. Effects of steroidal and nonsteroidal aromatase inhibitors on markers of bone turnover in healthy postmenopausal women. *Breast Cancer Res* 2007;9:R52.
 31. Tu D. Minimization Procedure. In: Chow SC, ed. *Encyclopedia of biopharmaceutical statistics*. 3rd ed. New York: Marcel Dekker, 2010:795-8.
 32. Gail MH, Brinton LA, Byar DP, et al. Projecting individualized probabilities of developing breast cancer for white females who are being examined annually. *J Natl Cancer Inst* 1989;81:1879-86.
 33. Solomon SD, McMurray JJV, Pfeffer MA, et al. Cardiovascular risk associated with celecoxib in a clinical trial for colorectal adenoma prevention. *N Engl J Med* 2005;352:1071-80.
 34. Ware JE Jr. SF-36 health survey update. *Spine (Phila Pa 1976)* 2000;25:3130-9.
 35. Hilditch JR, Lewis J, Peter A, et al. A menopause-specific quality of life questionnaire: development and psychometric properties. *Maturitas* 1996;24:161-75. [Erratum, *Maturitas* 1996;25:231.]
 36. Ware JE, Kosinski M, Dewey JE. How to score version 2 of the SF-36 health survey. Lincoln, RI: QualityMetric, 2000.
 37. Cancer Therapy Evaluation Program. Common terminology criteria for adverse events, version 3.0. March 31, 2003. (http://ctep.cancer.gov/protocolDevelopment/electronic_applications/docs/ctcaev3.pdf.)
 38. Norman GR, Sloan JA, Wywich KW. Interpretation of changes in health-related quality of life: the remarkable universality of half a standard deviation. *Med Care* 2003;41:582-92.
 39. Wywich KW, Fihn SD, Tierney WM, Kroenke K, Babu AN, Wolinsky FD. Clinically important changes in health-related quality of life for patients with chronic obstructive pulmonary disease: an expert consensus panel report. *J Gen Intern Med* 2003;18:196-202.
 40. Whelan TJ, Goss PE, Ingle JN, et al. Assessment of quality of life in MA.17: a randomized, placebo-controlled trial of letrozole after 5 years of tamoxifen in postmenopausal women. *J Clin Oncol* 2005;23:6931-40.
 41. Perez EA, Josse RG, Pritchard KI, et al. Effect of letrozole versus placebo on bone mineral density in women with primary breast cancer completing 5 or more years of adjuvant tamoxifen: a companion study to NCIC CTG MA.17. *J Clin Oncol* 2006;24:3629-35.
 42. Eastell R, Adams JE, Coleman RE, et al. Effect of anastrozole on bone mineral density: 5-year results from the anastrozole, tamoxifen, alone or in combination trial 18233230. *J Clin Oncol* 2008;26:1051-7.
 43. Coleman RE, Banks LM, Girgis SI, et al. Reversal of skeletal effects of endocrine treatments in the Intergroup Exemestane Study. *Breast Cancer Res Treat* 2010;124:153-61.
 44. Geisler J, Lønning PE, Krag LE, et al.

Changes in bone and lipid metabolism in postmenopausal women with early breast cancer after terminating 2-year treatment with exemestane: a randomised, placebo-controlled study. *Eur J Cancer* 2006;42:2968-75.

45. Eastell R, Adams J, Clack G, et al. Long-term effects of anastrozole on bone mineral density: 7-year results from the

ATAC trial. *Ann Oncol* 2011;22:857-62.

46. Cuzick J, Sestak I, Baum M, et al. Effect of anastrozole and tamoxifen as adjuvant treatment for early-stage breast cancer: 10-year analysis of the ATAC trial. *Lancet Oncol* 2010;11:1135-41.

47. Mouridsen H, Keshaviah A, Coates AS, et al. Cardiovascular adverse events during adjuvant endocrine therapy for

early breast cancer using letrozole or tamoxifen: safety analysis of BIG 1-98 trial. *J Clin Oncol* 2007;25:5715-22.

48. Ingle JN, Tu D, Pater JL, et al. Duration of letrozole treatment and outcomes in the placebo-controlled NCIC CTG MA.17 extended adjuvant therapy trial. *Breast Cancer Res Treat* 2006;99:295-300.

Copyright © 2011 Massachusetts Medical Society.



West Highland Way, Scotland

Paul Engels, M.D.